

PROJECT:	DATE:
PREPARED BY:	NOTES:

T8 TUBE LIGHT SPECIFICATIONS

DESCRIPTION

- * One ended & double ended bypass Type B;
- * Base: G13, FA8, R17D available;
- * Environmentally friendly without mercury;
- * 50,000 hours or more working time and 5-year warranty;
- * 120-150LPW high lumen efficiency;
- * No mercury glass so NO Regulated Universal Waste rules or fines.



COMMON TECHNICAL DATA

Color temperature	ETL:2700-6500K DLC:3000-5000K
CRI	>80
Operation Temperature	-68~122 °F
Input voltage	AC 100-277V
Power factor	0.95
Warranty	50,000 hours / 5 years
Housing material	Aluminum + pc
LED type	SMD2835
Lumen efficiency	120-150LPW
Certification	ETL/DLC
DLC item	36W; 40W and 60W T8 single pin



Government



Corporate

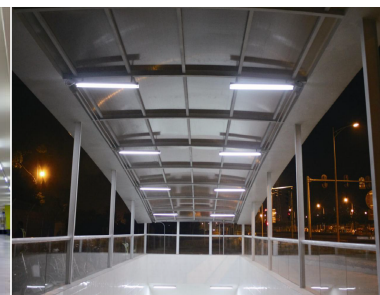
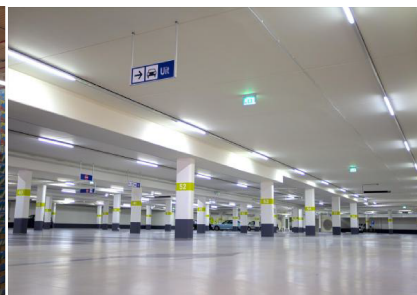
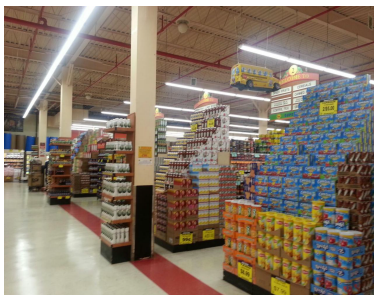
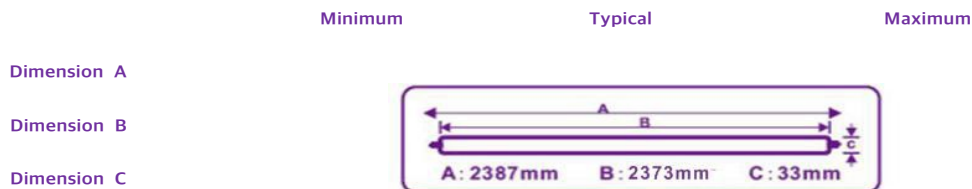


Hospital



Education

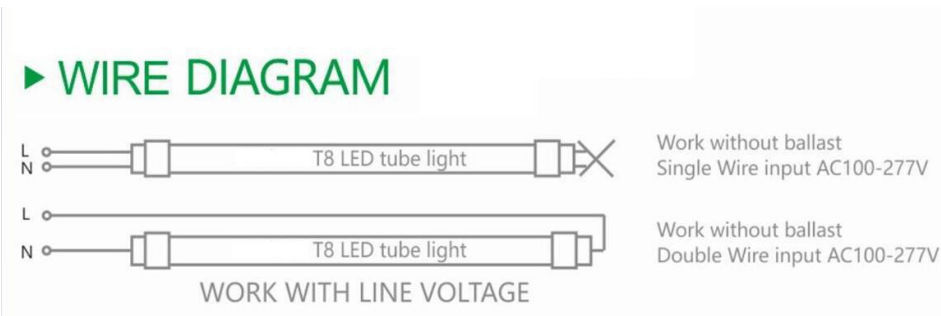
MECHANICAL CHARACTERISTICS FOR 8 FOOT



Type	Part No.	Wattage	lm/w	Lumens clear cover	Lumen range	CCT
	ZS-T8-36W8FT-FA8 ZS-T8-36W8FT-R17D	36W	120	4400 LM	Standard range	2700K-6500K
	150		5400 LM	Premium range		
	ZS-T8-40W8FT-FA8 ZS-T8-40W8FT-R17D	40W	120	4800 LM	Standard range	2700K-6500K
	150		6000 LM	Premium range		

ZS-T8-48W8FT-FA8 ZS-T8-48W8FT-R17D	48W	120	5700 LM	Standard range	2700K-6500K
		150	7000 LM	Premium range	
ZS-T8-60W8FT-FA8 ZS-T8-60W8FT-R17D	60W	120	7200 LM	Standard range	2700K-6500K
		/	/	/	

WARNING: DOUBLE ENDED TYPE B



WARNING

- Not for use in vapor-tight fixture.
- Not for use with dimmers.
- Not suitable for outdoor use.
- Not suitable for high temperature or damp locations.
- Not suitable for heavy air polluted locations.
- Please turn off the power before replacing new bulb.

CAUTION

- Risk of electric shock;
- Use in dry locations only.

PACKAGE

	Dimensions	pcs/ctn	kg/ctn	20GP	40HQ
Value 8 foot	242.5*21*18.5cm	25	16	5,600pcs	13,280pcs

REMARK

- All of the mechanical, electrical and light characteristics in this document are typical value.

WARRANTY

This product has a warranty for a period of 5 years from the date of purchase. The warranty is invalid in the case of improper installation, tampering, or removal of the Q.C. date label. Installation in an improper working environment or installation not according to the current edition of the National Electric Code also invalidates the warranty. If this product fails during the warranty period, it will be replaced free of charge, subject to correct installation and return of the faulty unit. ALI does not take responsibility for any installation costs associated with the replacement of this product. This warranty is an addition to the statutory rights in the country of purchase. ALI reserves the right to alter specifications without prior notice.